

Current outflow from Heli's Pond

Dike shown in photo

Side channels that could be reopened if berms are washed away

Fish (Type 2)

Fish (Type 2)

Unknown (Type)

Trillium Loop

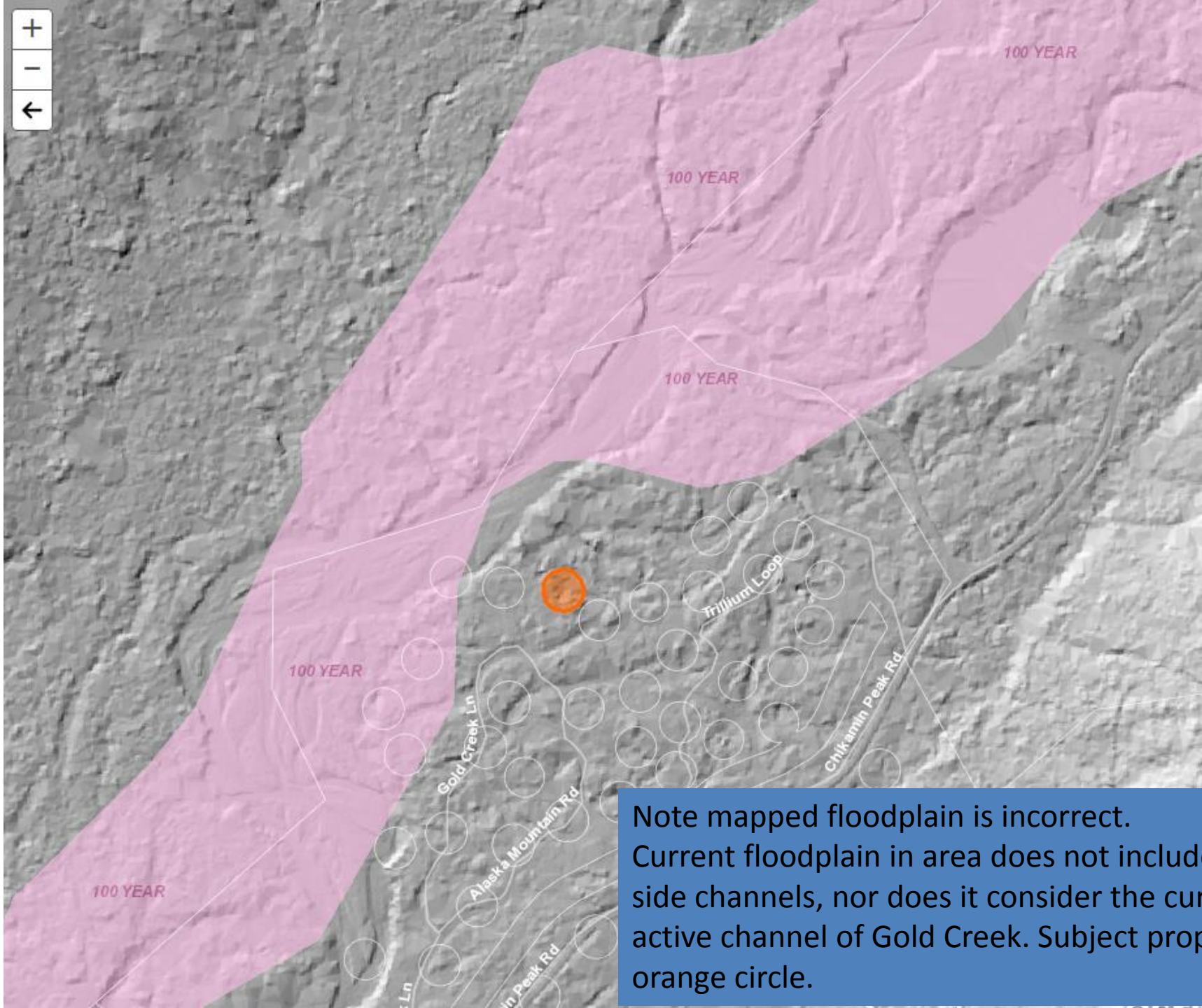
Non-Fish (Type 4)
Chikamin Pe Rd

Gold Creek Ln

Mountain Rd

Fish (Type 2)



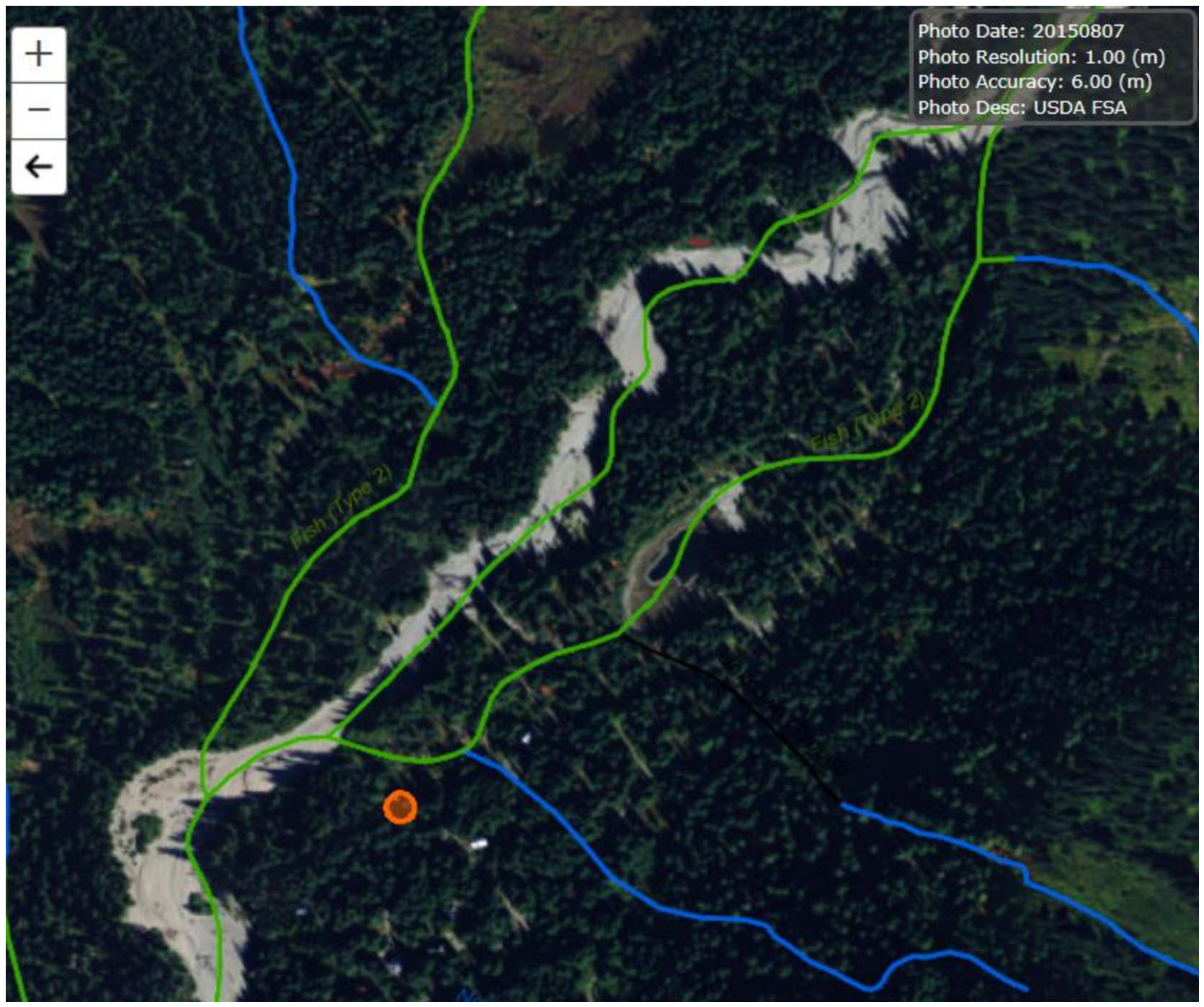


Note mapped floodplain is incorrect. Current floodplain in area does not include side channels, nor does it consider the current active channel of Gold Creek. Subject property is orange circle.

Photo Date: 20150807
Photo Resolution: 1.00 (m)
Photo Accuracy: 6.00 (m)
Photo Desc: USDA FSA



Photo Date: 20150807
Photo Resolution: 1.00 (m)
Photo Accuracy: 6.00 (m)
Photo Desc: USDA FSA



Fish (Type 2)

Fish (Type 2)



Current cabin site and associated side channel looking east
Picture taken immediately NW of cabin site looking back towards cabin



Dike, just south of Heli's Pond that currently diverts most of the water away from Cabins to the south. If this dike were to break, the cabin site would get annual spring flows.

